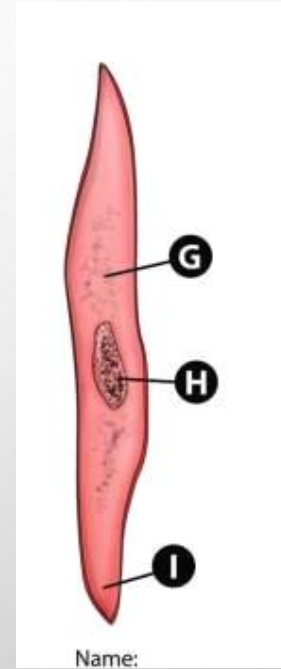
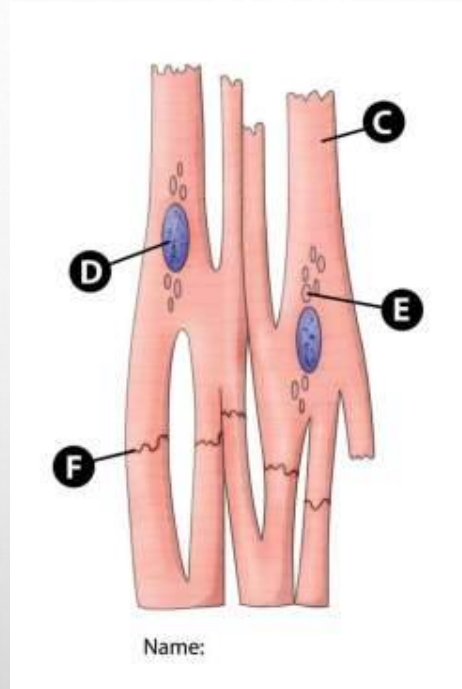
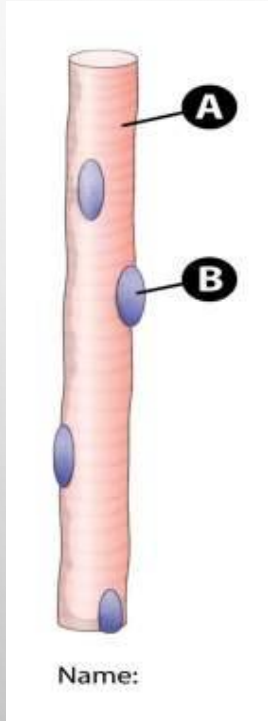




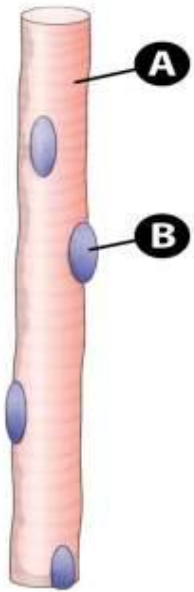
HISTOLOGY OF MUSCLE TISSUE

- IDENTIFY ALL THE LABELS ON THE FOLLOWING
SERIES OF IMAGES

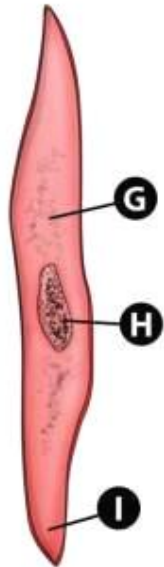
MUSCLE TISSUE



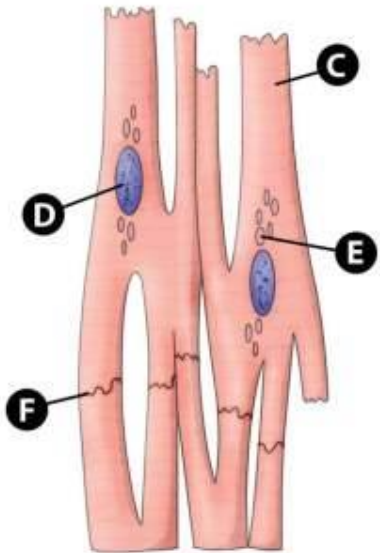
MUSCLE TISSUE



Name:



Name:



Name:

A. SKELETAL MUSCLE FIBRE

B. NUCLEUS

C. CARDIAC MUSCLE FIBRE

D. NUCLEUS

E. MITOCHONDRIA

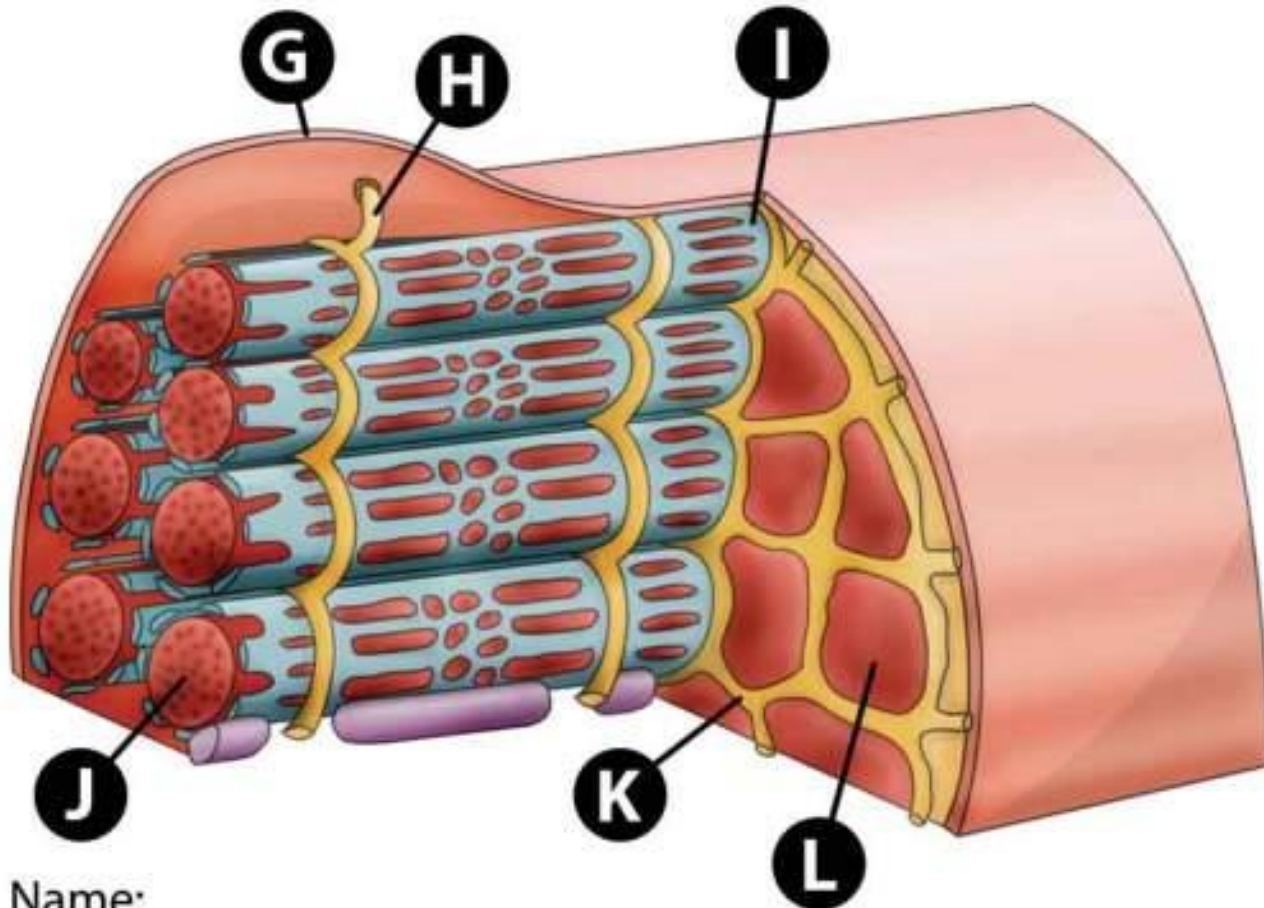
F. INTERCALATED DISC

G. MITOCHONDRIA

H. NUCLEUS

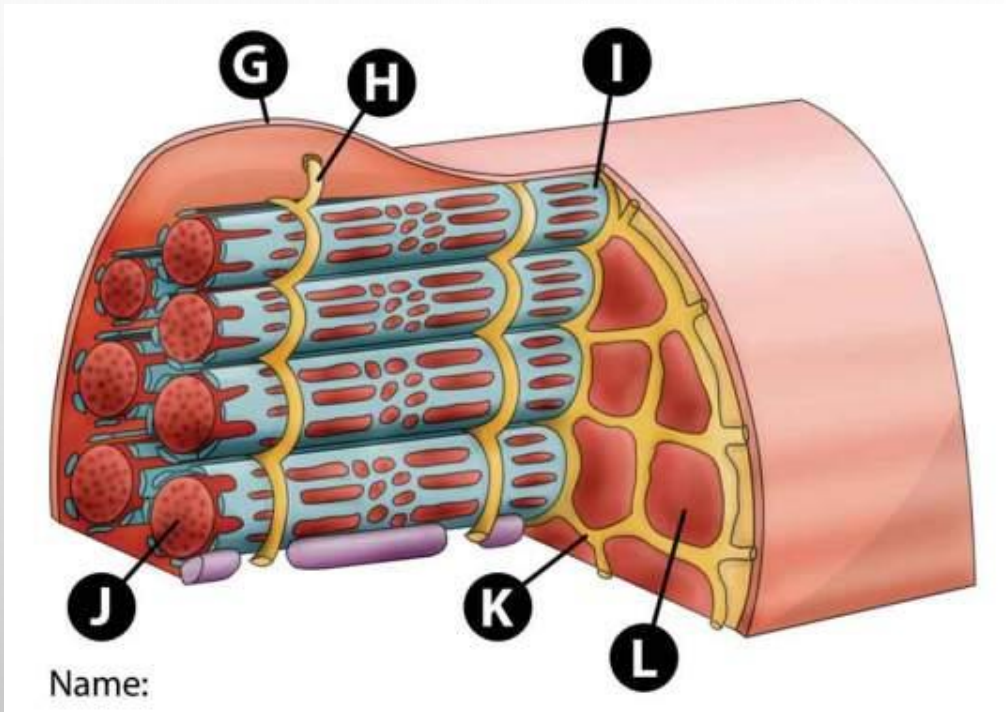
I. SMOOTH MUSCLE FIBRE

STRIATED – SKELETAL MUSCLE



Name:

STRIATED – SKELETAL MUSCLE



- G. EPIMYSIUM
- H. T-TUBULE
- I. ENDOPLASMIC
RETICULUM
- J. MUSCLE FIBRE
- K. PERIMYSIUM
- L. FASCICLE

The image features a light gray background with several realistic water droplets of various sizes scattered across it. The droplets are rendered with soft shadows and highlights, giving them a three-dimensional appearance. In the center of the image, the word "END" is written in a bold, black, sans-serif font.

END