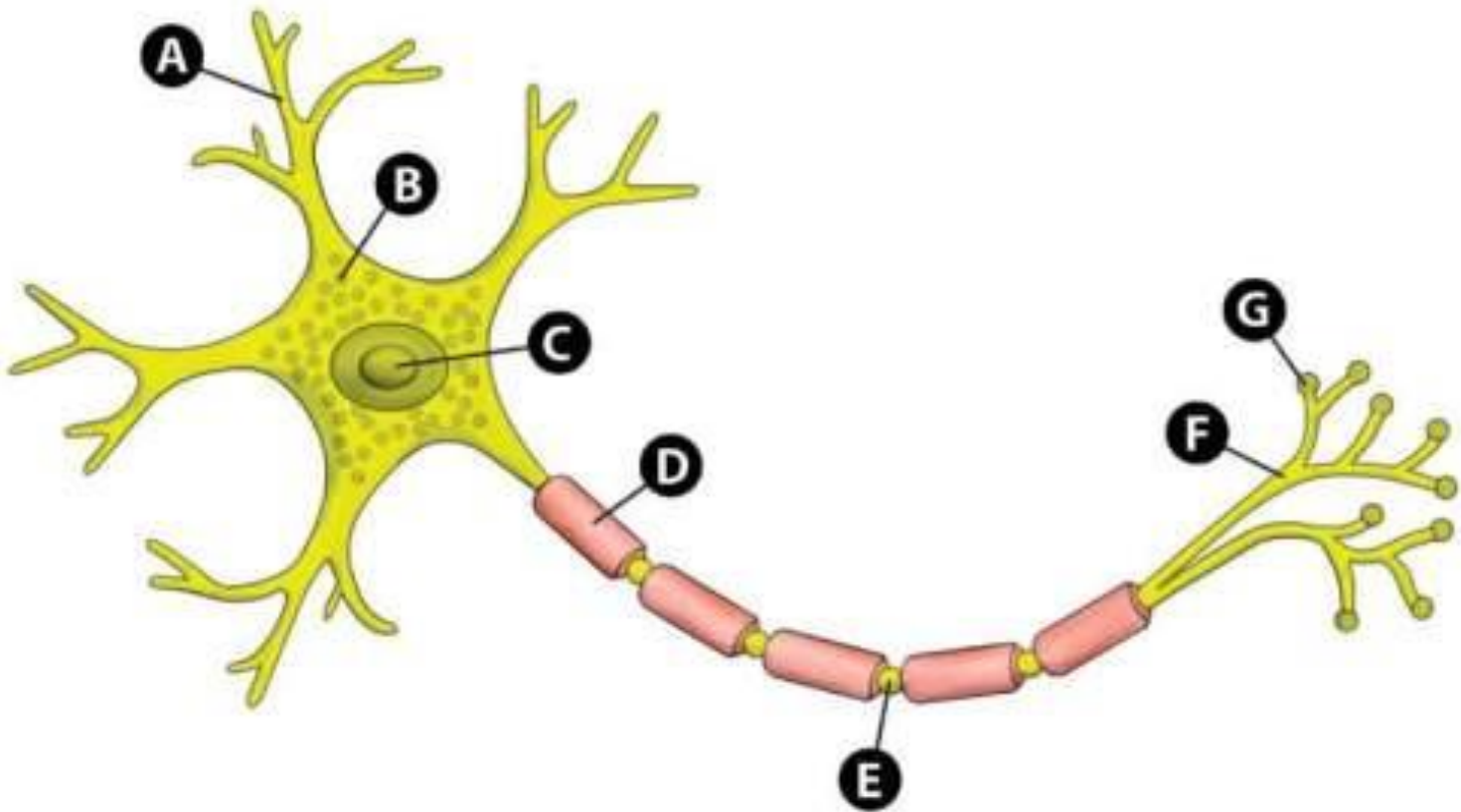


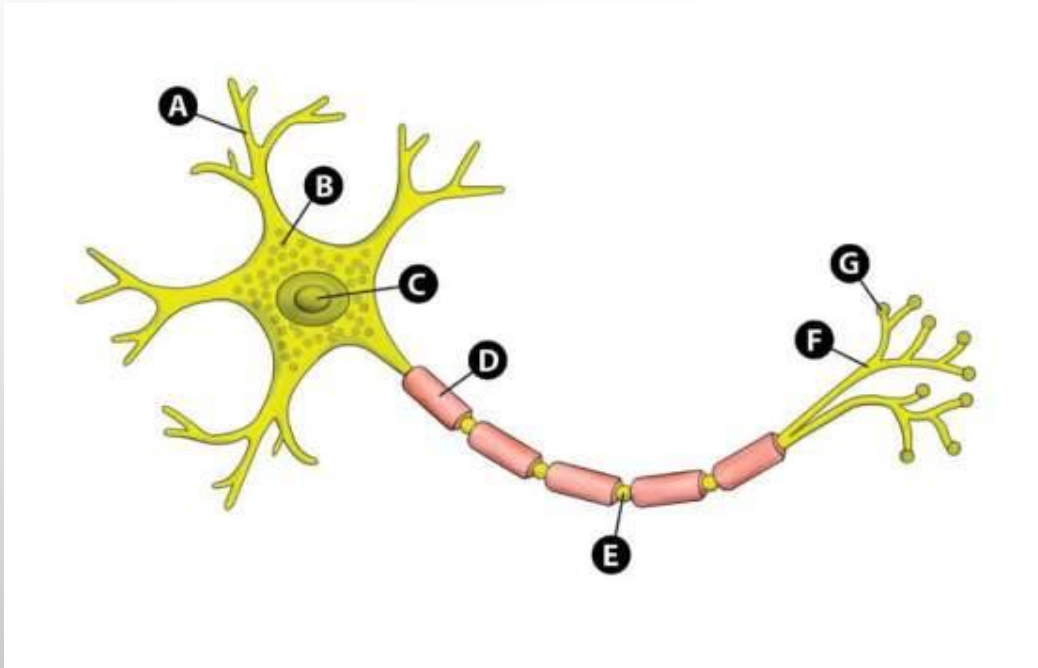
THE STRUCTURE OF THE NERVOUS SYSTEM

➤ IDENTIFY ALL THE LABELS ON THE FOLLOWING IMAGES

NEURONE

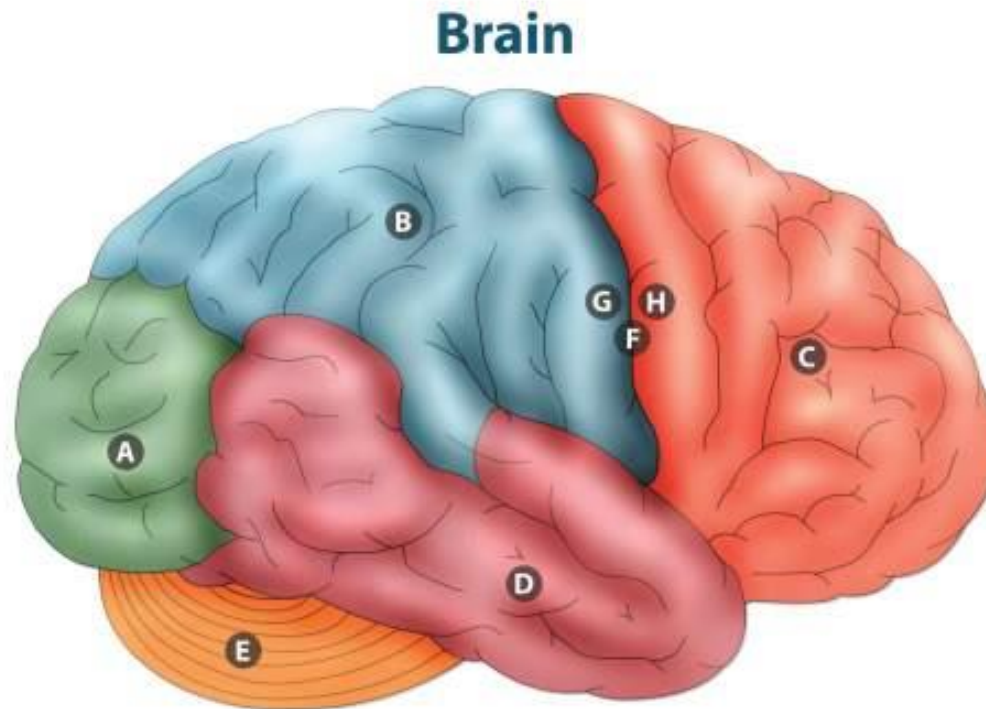


NEURONE

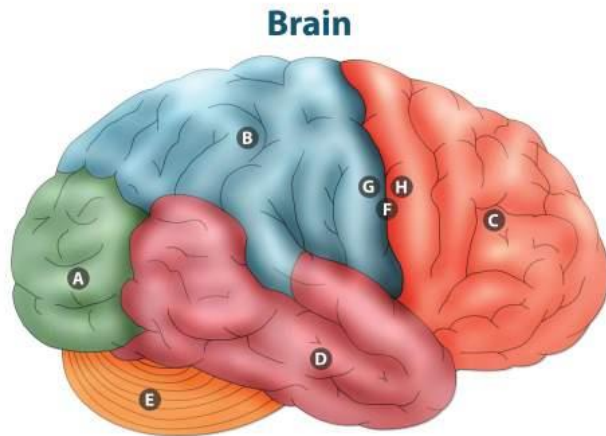


- A. DENDRITES
- B. NISSLE BODIES
- C. CELL NUCLEUS
- D. SCHAWNN CELL / MYELIN SHEATH
- E. NODES OF RANVIER
- F. AXON
- G. SYNAPTIC END BULB

THE HUMAN BRAIN

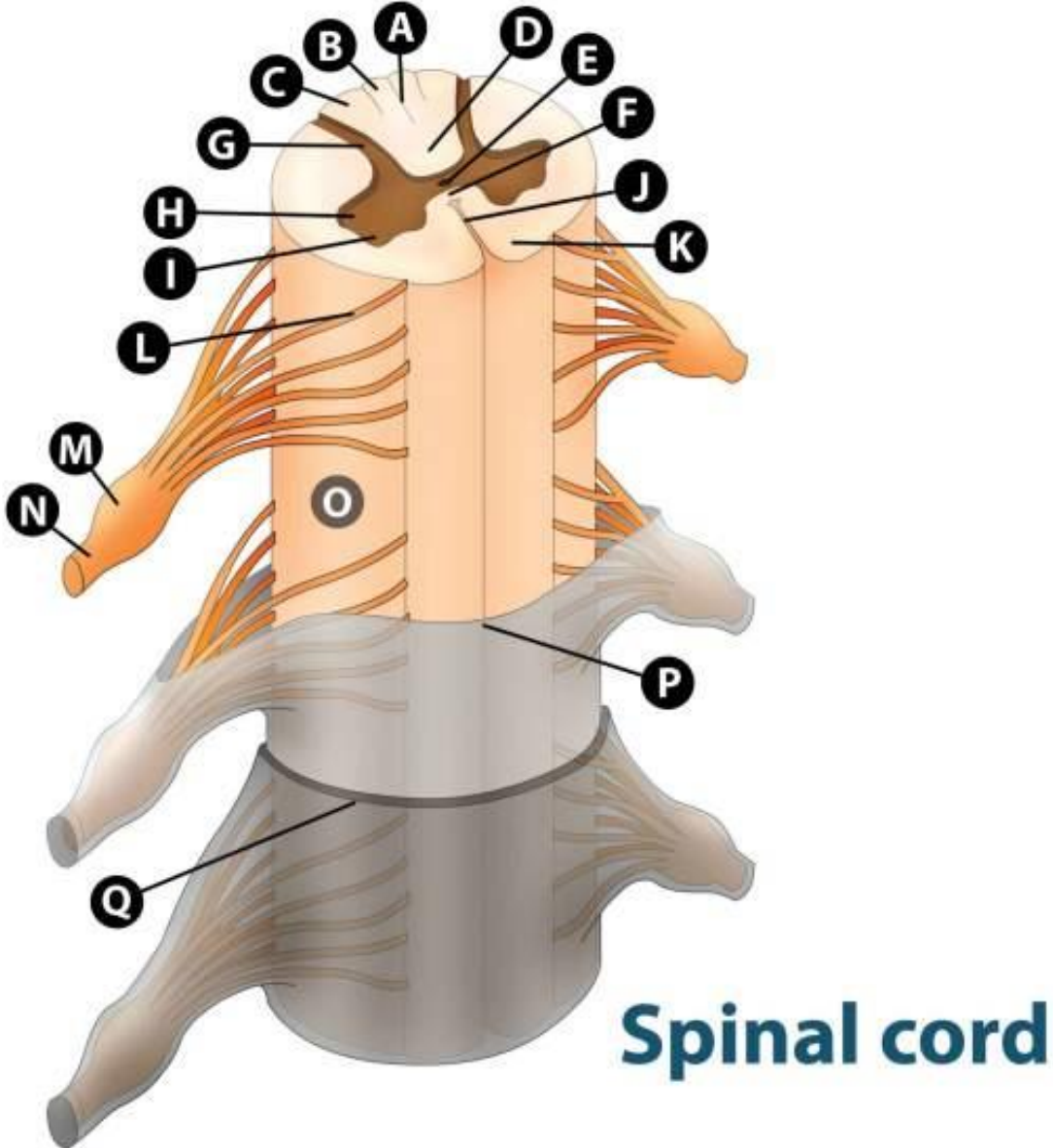


THE HUMAN BRAIN

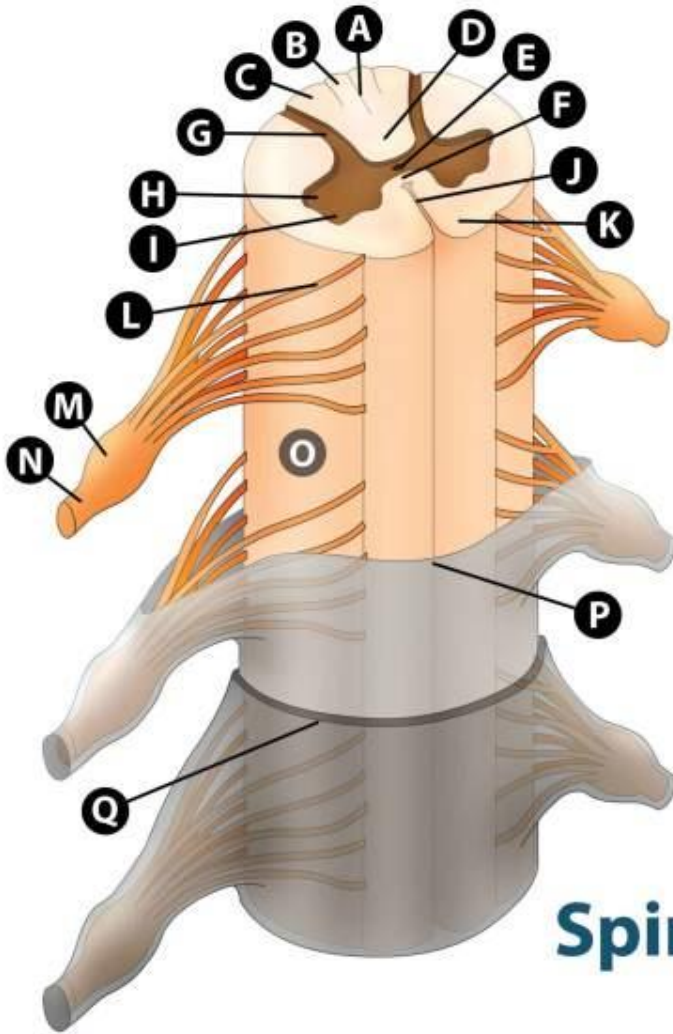


- A. OCCIPITAL LOBE
- B. PARIETAL LOBE
- C. FRONTAL LOBE
- D. TEMPORAL LOBE
- E. CEREBELLUM
- F. CENTRAL SULCUS
- G. POST CENTRAL GYRUS (PRIMARY SOMATOSENSORY AREA)
- H. PRE CENTRAL GYRUS (PRIMARY SOMATOMOTOR AREA)

THE SPINAL CORD



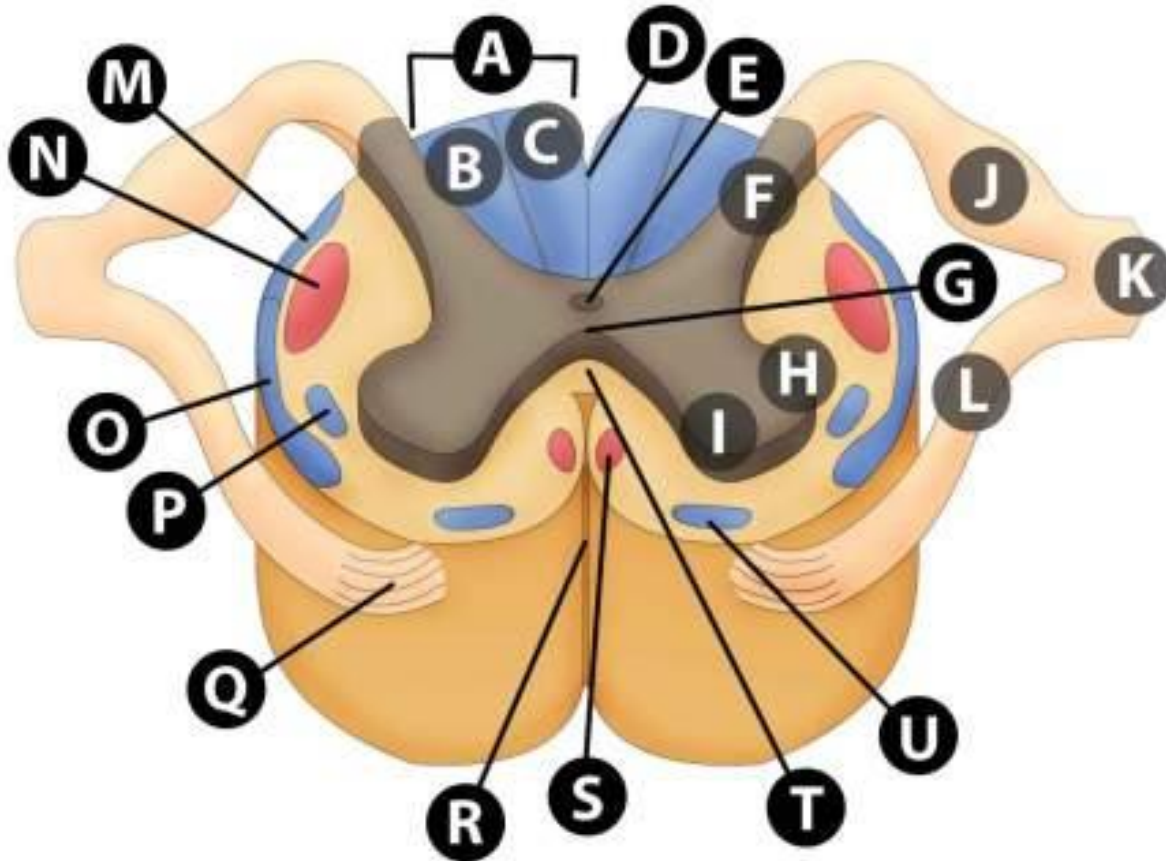
THE SPINAL CORD



Spinal cord

- A. POSTERIOR MEDIAN SULCUS
- B. POSTERIOR COLUMN (FASCICULUS GRACILIS)
- C. POSTERIOR COLUMN (FASCICULUS CUNEATUS)
- D. POSTERIOR WHITE COMMISSURE
- E. CENTRAL CANAL (SYRINX)
- F. ANTERIOR WHITE COMMISSURE
- G. POSTERIOR GRAY HORN
- H. GRAY MATTER
- I. LATERAL GRAY HORN
- J. ANTERIOR MEDIAN FISSURE
- K. ANTERIOR WHITE COLUMN
- L. ANTERIOR ROOTLETS
- M. POSTERIOR / DORSAL ROOT GANGLION
- N. SPINAL NERVE
- O. PIA MATER
- P. ARACHNOID MATER
- Q. DURA MATER

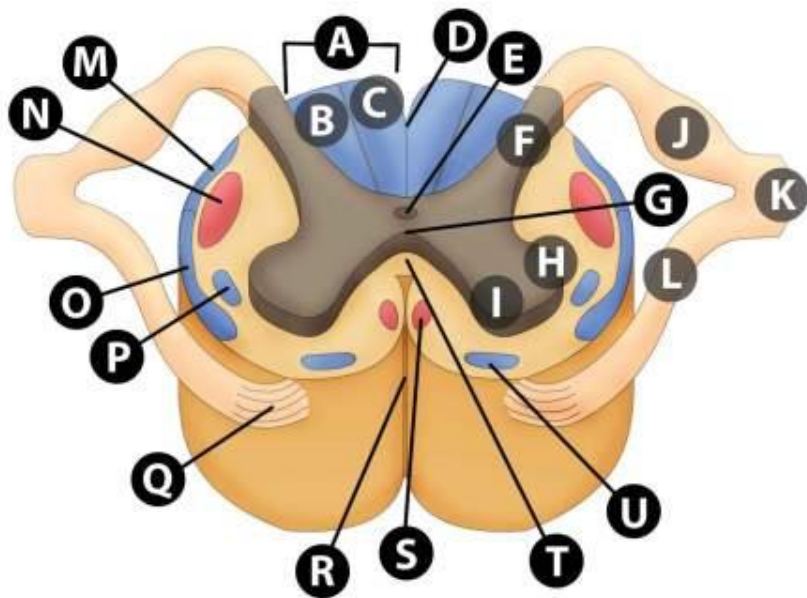
Spinal tracts



Ascending

Descending

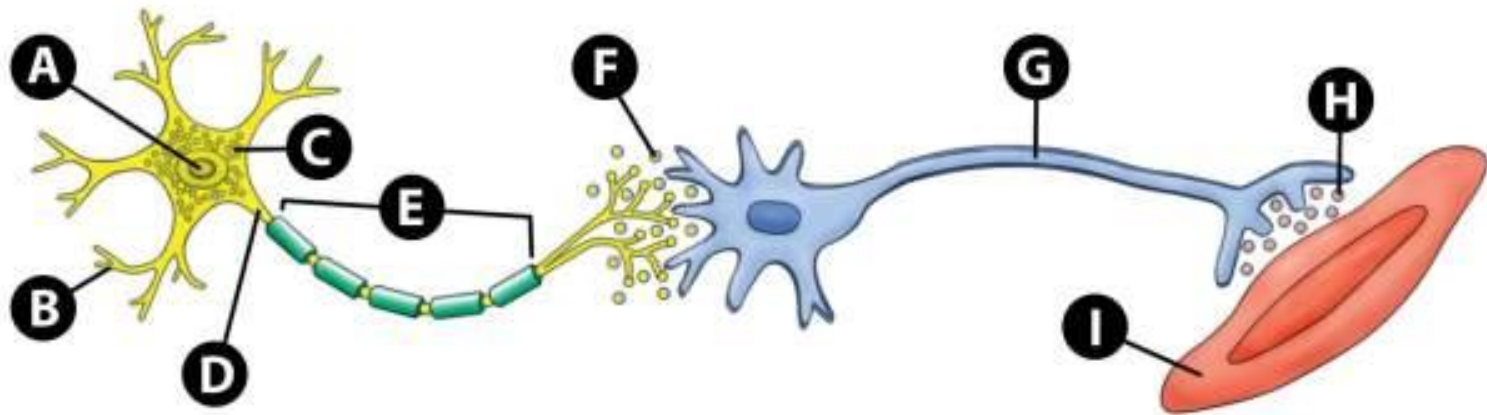
SPINAL TRACTS



- A. POSTERIOR COLUMN
- B. POSTERIOR COLUMN (FASCICULUS CUNEATUS)
- C. POSTERIOR COLUMN (FASCICULUS GRACILIS)
- D. POSTERIOR MEDIAN SULCUS
- E. CENTRAL CANAL (SYRINX)
- F. POSTERIOR GRAY HORN
- G. ANTERIOR GRAY COMMISSURE
- H. LATERAL GRAY HORN
- I. ANTERIOR GRAY HORN
- J. DORSAL ROOT GANGLION
- K. SPINAL NERVE ROOT
- L. ANTERIOR SPINAL ROOT
- M. POSTERIOR SPINOCEREBELLAR TRACT
- N. LATERAL CORTICOSPINAL TRACT
- O. ANTERIOR SPINOCEREBELLAR TRACT
- P. LATERAL SPINOTHALAMIC TRACT
- Q. ANTERIOR SPINAL ROOTLETS
- R. ANTERIOR MEDIAN FISSURE
- S. ANTERIOR CORTICOSPINAL TRACT
- T. ANTERIOR WHITE COMMISSURE
- U. ANTERIOR SPINOTHALAMIC TRACT

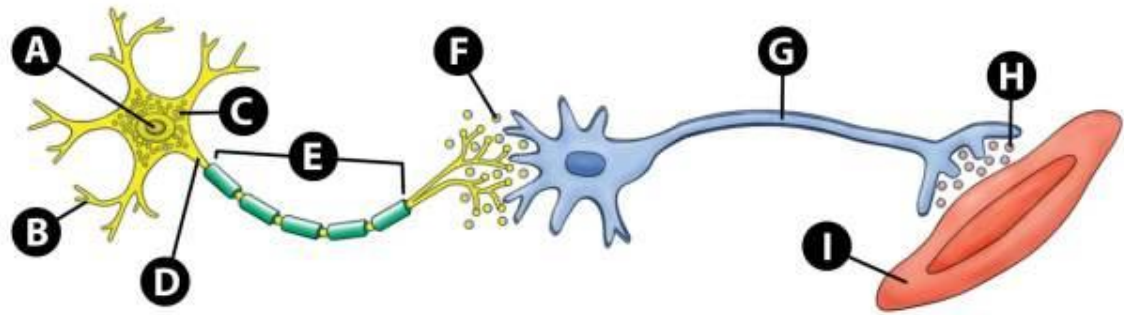
SYMPATHETIC NEURONE AND SMOOTH MUSCLE

Sympathetic neurones



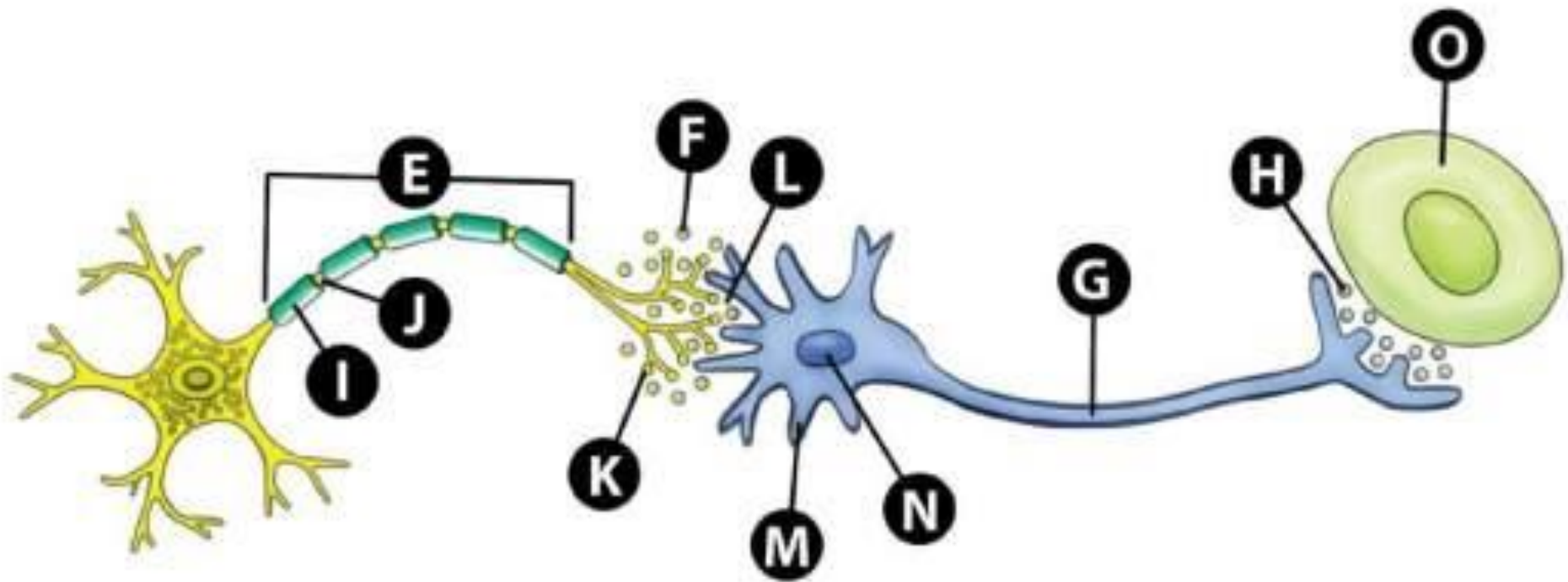
SYMPATHETIC NEURONE AND SMOOTH MUSCLE

Sympathetic neurones

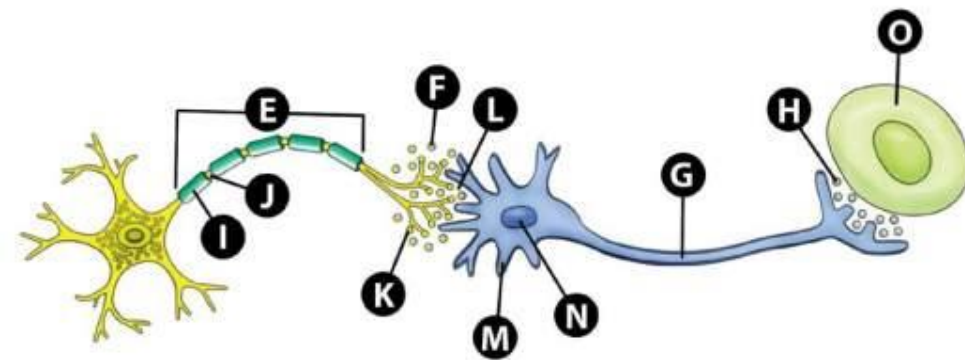


- A. NUCLEUS
- B. DENDRITES
- C. NISSLE BODIES
- D. AXON
- E. MYELINATED NEURONE
- F. ACETYLCHOLINE IN SYNAPSE
- G. POST GANGLIONIC AXON
- H. NORADRENALIN IN NEUROMUSCULAR SYNAPSE
- I. EFFECTOR CELL IN SYMPATHETIC SYSTEM, IE: ERECTOR PILI MUSCLES

SYMPATHETIC NEURONE AND SWEAT GLAND

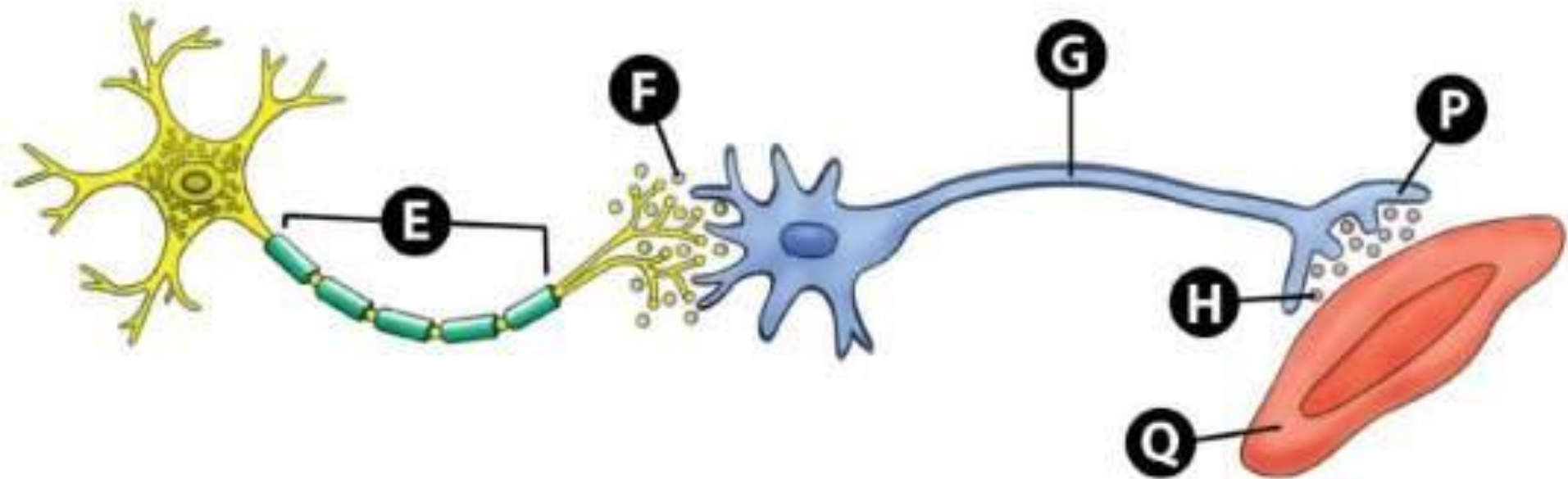


SYMPATHETIC NEURONE AND SWEAT GLAND

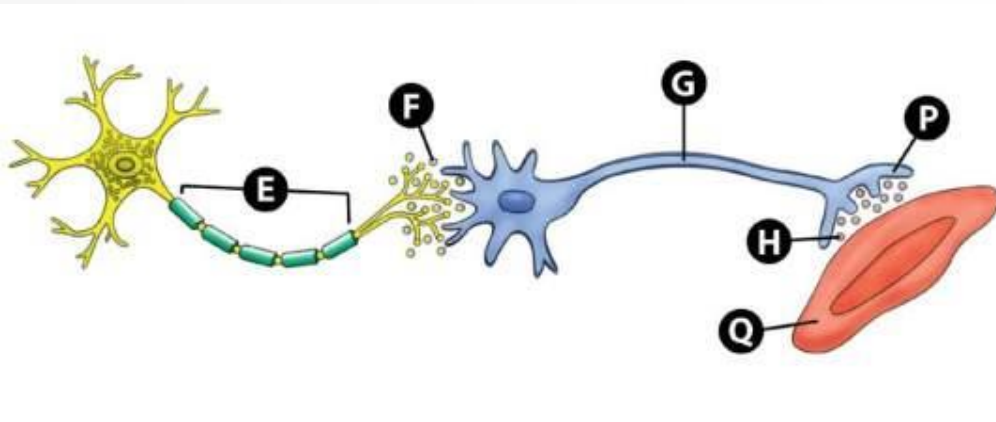


- E. MYELINATED AXON OF PREGANGLIONIC SYMPATHETIC NEURONE
- F. ACETYLCHOLINE IN GANGLION BINDING ONTO NICOTINIC RECEPTORS
- G. AXON OF POSTGANGLIONIC NEURONE
- H. ACETYLCHOLINE IN NEUROGLANDULAR SYNAPSE BINDING ONTO MUSCARINIC RECEPTORS
- I. MYELIN SHEATH
- J. NODES OF RANVIER
- K. SYNAPTIC END BULBS
- L. NICOTINIC RECEPTORS ON POSTGANGLIONIC DENDRITES
- M. DENDRITES OF POSTGANGLIONIC NEURONE
- N. CELL BODY OF POSTGANGLIONIC NEURONE

PARASYMPATHETIC NEURONE AND SMOOTH MUSCLE



PARASYMPATHETIC NEURONE AND SMOOTH MUSCLE



- E. MYELINATED AXON OF PREGANGLIONIC PARASYMPATHETIC NEURONE
- F. ACETYLCHOLINE IN PARASYMPATHETIC GANGLION
- G. AXON OF POSTGANGLIONIC PARASYMPATHETIC NEURONE
- H. ACETYLCHOLINE IN POSTGANGLIONIC SYNAPSE
- P. SYNAPTIC AXON TERMINAL / END BULB OF POSTGANGLIONIC PARASYMPATHETIC NEURONE
- Q. PARASYMPATHETIC EFFECTOR CELL: IE SMOOTH MUSCLE

The image features a light gray background with a subtle gradient. In the top-left and bottom-right corners, there are several realistic water droplets of varying sizes. Each droplet is rendered with a soft, white highlight on its upper-left side and a gentle shadow on its lower-right side, giving them a three-dimensional appearance. The word "END" is centered in the middle of the page in a bold, black, sans-serif font.

END